

From the Horse's Mouth

PULL OUT
Village &
Dog Show
Forms INSIDE

The Horspath
Magazine
August - September
2023

Issue
No. 5

Cover Photo: (c) Rob Judges

Horspath



Nursery

During term 6 we looked at road safety. You may have seen us walking around the village learning how to cross the road safely as well as learning about road signs, how to navigate roundabouts and learning left and right.



We also held a Bee Week where we looked at bees, their habitats, bee keeping, tasted honey, made bees, wore beekeeping suits and learned how to use a bee smoker. (Kindly lent to us by Dick Burgess)



We had a visit from Zoolab who brought along exotic animals for us to explore. We also had a visit from Teach Rex giving children the chance to meet a range of different dinosaurs that are all unique and have different personalities. We held a sports day too!

Horspath Nursery, Blenheim Road, Horspath, Oxford, OX33 1RY
staff@horspathnursery.org.uk Tel: 01865 876750

Message from the Editors:

You may have noticed that this edition is larger. As well as the Village Show pull-out we now have an additional 4 pages. The cost of the magazine is now being entirely covered by a grant from the Stone Pit Trust, for which we are very grateful. However you will also have noticed that three companies have very generously sponsored the magazine, so please mention the magazine if you contact them. If you have a small business or Start Up, please contact us if you would like to be a sponsor. The cost is very reasonable considering the distribution and our on-line version, and this will help us become more flexible. (on-line: go to: www.horspathhub.co.uk, click on the Magazines tab) Thanks go to Geoff Roynon who puts them on for us.

We must thank again all the villagers who deliver the magazine, especially this time as it's heavier! We would also like to thank Rob Judges who has become our magazine photographer so we are very fortunate. His pictures are all high resolution and he attends events for us if we need photography.

The last submission date for the next issue covering October and November is 15th September, with the publishing date of 29th September. As always, many thanks for your continued support and interest but please have a think about what you could contribute. We are always open to suggestions if you think it would interest our readership.

The contact email address for any articles, pictures or ideas is:

thehorspathmagazine@gmail.com

For more information about **Sponsorship** it's the same email address

Many thanks

John, Anna & Brian (Editors)

ABC Gas & Plumbing Ltd. are proud to sponsor the Horspath Magazine.

We are a local Gas Safe and plumbing engineering company based in Garsington. Please contact us for a free quote:

Aaron - 07894466025 or Lucy - 07849116805

Based at 40 Elm Drive, Garsington, Oxford, OX44 9AQ

Horspath Parish Council Wildlife Conservation Area Welcomes New Volunteers

One of Horspath's many public assets greatly enjoyed by village residents is the Horspath Parish Council Wildlife Conservation Area in the disused railway cutting which is accessed from the gate by the bridge in Butts Road, and like all the other village assets, it is maintained by a group of volunteers, and we are now looking for new



members to join this group. Links to a brief introduction to this community environmental conservation project, and to the current work plans are posted under 'Latest News' on the front page of Horspath Parish Council's website at <https://horspathparishcouncil.org/> with a link there for new volunteers to send their contact details to our Parish Clerk. Links are also provided there to the current volunteer work plan, and the current site Management Plan can also be found there under headings 'Organisations & Businesses': 'Village Organisations'. There are jobs available on designated working days for all kinds of people of all ages, and most of the jobs can be fairly described as 'large scale gardening', ranging from raking up leaves and tea-making for the mid-morning tea break to learning how to safely use some of the powered equipment. Volunteer work here can also qualify as part of the Duke of Edinburgh's Award, and there is also scope here for school students to do a Level 3 Extended Project Qualification (EPQ) with the approval of their school. The first 23 years of this local project have undoubtedly been a lot of fun for the original volunteers who have converted the disused railway cutting and tunnel into a superb Local Wildlife Site, and while most of the volunteer work ahead is aimed at maintaining the wildlife habitats and safe public access to the site, there are still a few construction projects for volunteers to help our professional builder with, and as soon as our Parish Clerk has a list of contact details for new volunteers, I will email everyone on that list to name the specific Saturday morning when we will welcome everyone to come along to have a tour around the whole site and see what they can do to help.

Martin Harris

Volunteer Project Manager for Horspath Parish Council

Senior Residents Update



Late but not forgotten: A Nostalgic Tea Party

Although we celebrated the King's Coronation in June (a month late), the Senior Residents had a very successful tea party. The Hub was decorated with bunting & balloons, Red, White & Blue tablecloths & Union Jack plates. Some of the members brought their family heirlooms of bone china cups & teapots. When all the decoration was completed, it reminded us of Dad's Army, a touch of nostalgia. Many of the members who attended came dressed for the part in red, white & blue. Several were unrecognisable until they spoke! During the event we were entertained by two of our local residents, Diane & Ian Woods who had everyone singing & tapping their toes. Finally we ended the proceedings with a toast to our new King Charles 111. It was indeed a most memorable occasion.

Leonora Richardson, Chair of the Senior Residents

Our Day Trip To Windsor (5th July '23)

Being an established member of Horspath Senior Residents Club our day trip started by visiting Runnymede by coach with an experienced, happy, helpful driver. The weather was kind to us, warm with only a little rain! Arriving at Runnymede we all boarded a large boat then travelled along the River Thames through Old Windsor Lock and Romney Lock. Travelling some four plus miles over one and half hours alongside many beautiful riverside properties, seeing much water wildlife, plus picturesque countryside; with even a view in the distance of Windsor Castle! On arriving at Windsor a free period of time followed, then for lunch a choice of many restaurants close to the castle, a walk to shops, a sit along the river. Returning to the coach at 3.30pm followed by a luxury coach trip back to Horspath. A most enjoyable and interesting day trip out with great company.

By Julia Barnes





A Memory of Horspath by Sheila Dandridge, written by her in February 2017

I am not a native of Horspath Village as I was born at Bognor Regis in West Sussex in 1932. My family moved a lot when I was a child, mainly around Sussex. We came to Oxfordshire when I was 11 years old. I was a shy child, always having to get to know new school teachers, children and neighbours. I came to live in Horspath when I married a Horspath man in 1960. I did not know the village, although I only lived across the fields. I had only visited it once when a friend and I walked down off the hill from Shotover. I remember we visited St. Giles' Church, and put our names in the visitors' book. We liked the Church. It had a friendly atmosphere. I did not think I would be living opposite in years to come. After I met Alan, my husband to be, I came to Horspath a lot. Alan was disabled, so it was easier for me to visit him. I am a Methodist, so we were married at Horspath Chapel and had our reception in the Old Army hut that was Horspath Village Hall. Several years later when the Chapel closed, I started attending St Giles' Church and was made very welcome and, living opposite, quite useful too. Alan was born in one of the railway cottages which border the green, when the fair was taking place in September 1928. His Uncles decided to win something for their new nephew and they played darts until they had a big teddy bear. It still lives at the top of the stairs in my house. A lot of new roads and houses were being built when I first knew the village. Manor Drive and Wrightson Close were on ground sold for building from the owners of the Manor House. Butler Close was named after a well liked Vicar. Spring Lane and Fords Close are self-explanatory and Blenheim Road and Blenheim Way go into Blenheim, which is at the foot of Shotover. Blenheim has connections to the Duke of Marlborough and the war in 1704. I am not sure of the history regarding this. There have been a lot of changes since I came. Passenger trains were running and, later, goods trains from the car factory at Cowley. Sometimes it would get held up on the track through Horspath when it was wet. Another engine would come to give it a push. The ground from the bridge in Butts Road is now a nature reserve and bats live in the tunnel. There are now only three thatched cottages. I have been told there were 14. The roof of one was burnt since I came. The Queens Head pub was thatched, but I believe it was struck by lightning many years ago. The Chapel was bought by the village and is used for a lot of interesting classes, etc., some of which I attend. The Gardening Club, Sitting Yoga, Creative Writing. There are others I would like to, but haven't the time for more. There is a coffee morning and Post Office every Friday that I and a lot of Horspath residents use. The village shop is well stocked and also sells newspapers, etc. Milk is delivered to my doorstep three days a week in glass bottles. Living in Horspath for over 56 years, I have put my roots down and been able to grow. I am not so shy now. I like meeting people and can talk freely with most. Thank You Horspath.

Sheila is now 91 years old.

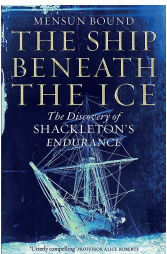
HOMeward 'BOUND'



Residents of Horspath had a rare opportunity to hear Mensun Bound explain how he and his team discovered Ernest Shackleton's Endurance. Taking time out from his global tour, he came back to Horspath where he lives, and began by saying what a real pleasure it was to be talking to his neighbours and residents right in his home village. The Community Hub was packed to the rafters for this all ticket opportunity, with a chance at the end to obtain his book which he signed and spoke at length to each resident as they came forward. 'The Ship Beneath the Ice'* is an incredible book, already in its eighth edition, a must read which brings history alive. After 10 years of planning, the Endurance which had sunk in freezing Antarctic waters in 1915 was found deep in the Weddell Sea there. With 5 metre thick ice and temperatures of -35 degrees, the team scoured the depths with state of the art deep sea equipment. After surveying an area equivalent to Central London it was finally located on 5th March 2022 at a depth of 3000 metres, exactly 107 years after it sank. The ship was in remarkable condition, even the paintwork could be seen. And on its stern the word ENDURANCE in large gold letters. Mensun, The Director of Exploration said that this was a milestone in maritime history, which will inspire others to seek to discover other things that have eluded us for so long. The 90 minute presentation was over too soon, but his first hand account of the discovery of such an important ship will last a great deal longer.

Thanks Mensun

**If you would like to purchase a signed copy, please email thehorspathmagazine@gmail.com with your name and contact details so we can pass them to Mensun for when he returns.*



This very special occasion was arranged by some of the Community Hub Trustees. In particular Sally Humphrey, Sheila Frankum & Anna Radcliffe

Horspath Parish Council

The new bench has now been installed in the Burial ground, thanks to Mr Hamlet for his assistance. Thanks to Mr Lee Coolman, and Mr Ian Harris for replacing the fascia boards and broken roof tiles at the bus shelter at Gateley and also repairing the gate at the Play Area. The new signs for the burial ground have arrived and will be fitted in the next couple of days. Defibrillator location signs have also been purchased and will be displayed on the village noticeboards. In the case of an emergency, the defibrillators are located outside the Village Hall, outside of Horspath Primary School and outside at the Berkeley Home Park. **HPC** has recently had their application approved to carry out work on the trees on the Village Green and expect this to be carried out in the near future. **HPC** is looking for volunteers to assist with maintenance and repair work required in the Conservation Area. Please see the website for details and contact the Clerk if you are able to assist. *(see page 4)* Thanks to Mill View Nursery who donated several plants for the plant pots in the village. **HPC** will be making further enquiries into the possibility of a pedestrian crossing in the village. **HPC** is looking at possible options to improve the footpath from Manor Farm Road to the Church. Horspath Fair will be held on Monday 18th September 2023. Horspath Village Hall Management Committee is urgently looking for volunteers to join their committee. If you are able to assist, please contact Mrs Penny Drew, the Booking Clerk. Horspath Parish Council currently has two vacancies for Parish Councillors. Applications should be sent to the Clerk, Mrs Hayley Kogel. If any resident wishes to raise issues with Horspath village please contact Hayley Kogel Clerk to HPC.

Horspath Stone Pit Charity

Organisations and individuals may use the website application form to apply for a grant from HSPC. Applications to be considered at the next meeting in September should be submitted by 1st September 2023. HSPC has recently awarded a further grant for the meal voucher scheme for elderly residents in the village which has proved so popular over recent months. Vouchers can be obtained from Mrs Beverley Oakley, Chair of HPC and HSPC. Two Trustees have recently carried out an inspection of the Stagecoach site and reported that the site is kept very well. Trustees agreed at the HSPC in June 2023 to cancel the Hardship Fund as no applications have been received since September 2023. The next Horspath Stone Pit meeting will take place in September (date to be confirmed), all residents are invited to attend.

HSPC Grants paid out in June 2023

School Uniform Grants	£600.00
Swimming Lesson Grants	£200.00
Organisation Grants	£4,398.00
Senior Citizens Meal Voucher Grant	£5,000.00
Computer Class Grant	£144.00
Total	£10,342.00

Community Apple Pressing Event

Horspath Hub

Saturday 30th September

14.00 - 17.00

Save apples from waste



Come along and press your family's own juice!

- Community Juice for Sale
- Raffle
- Tea, Coffee & Cake
- Apple fishing for the kids
- Apple Swap
- Family Treasure Hunt
- Apple Donation

**DON'T FORGET TO BRING EMPTY CONTAINERS FOR YOUR JUICE
(milk containers are perfect)**



Wildlife Wonders by Ross Gurden

(i) While it is widely believed that foxes are carnivorous, they are actually omnivorous meaning they eat a mixture of meat and vegetation, in their case fruit and berries, this adaptability has made them increasingly urbanized.

- (ii) Red Foxes have five toes on their front paws but only have four on their back paws.
- (iii) Foxes can make more than 40 different sounds with a variation of screams, barks and howls and use the earth magnetic field to judge the distance to prey when hunting.
- (iv) They can hear a watch ticking from 36 metres away.
- (v) Red Foxes can weigh up to 10kg, approximately the same as a 1 year old child.



Oxford Brewery and Tap Room

(by Sue Rowell Magazine Reporter)



How fortunate are we in Horspath, to have Oxford's one and only micro brewery! For the uninitiated, this little gem can be found in Cooper's Yard in the outbuildings of Manor Farm and it has been owned by Moira and Alastair Ross since 2016. They purchased the business from

Pip and Ed Murray who founded it in 2009 creating a number of craft beers, Prospect, Trinity and Hoptric to name but a few. As well as expanding the number of beers brewed, Moira and Alastair have created a Tap Room from one of the farm outbuildings - originally an old piggery, then a workshop for 'Newtrim'. They made the renovations during lockdown and opened outside as soon as the regulations allowed. It's a bit like sitting in your front room with cosy chairs and tables with a wood burning stove, art adorning the walls and best of all - a convivial atmosphere. "If people don't know each other when they arrive, they certainly do by the time they leave" says Moira, whilst Alastair, an architect in a previous life, explains his passion for brewing and pizza making. Two master brewers are employed to create a variety of beers from hops and malt, each with their own special flavours and each bearing a name taken from the myths and legends of Oxford. I arrive at the Tap Room just before 4pm on a Saturday afternoon and already there are customers sampling the various craft beers. Today, I tried 'Matilda's Tears' - named after Empress Matilda. This is very good beer; I must try the others. More people arrive - Harry the electrician, a group from the Shotover campsite, a couple from Cuddesdon and we all chat together - it gets busier and Moira and Alastair pull the pints and make the pizzas! As Terry, a local Friday night regular says, "I just love it here!"

Opening times are: Thursday – Saturday 4pm to 11pm

Pizzas available from 6pm to 8pm Friday and Saturday.

Horspath Village & Dog Show

Saturday 9th September 2023

Horspath Village Hall and Bowley Field

Programme of the day:

10.30am Dog show registration opens on Bowley Field (in gazebo).

11.00am Dog Show Start on Bowley Field.

10.30am to 12.00pm Show entries registration in Main Hall.

Refreshments in the Morgan room.

12.00pm to 2pm Judging (main hall closed to the public).

2pm Village Hall Show open to public viewing. Refreshments in the Morgan room.

3.30pm Raffle followed by Show Prize Giving.

4pm Close.

All proceeds from the show will go towards next year's show and show prizes. Any questions, please email show committee:

haa.horspath@gmail.com

For the show rules, online registration forms and full details, please go to the website: <https://geoffroynon.webmate.me/HAAsocial.html>

Registration Forms

One form per person in the village show and one form per dog for the dog show. Hand the relevant form in with your entry fee(s) of £1 per class entry for village show (Classes 1 - 37) and 50p for children's class entries (Classes 38 - 42) and £2 per dog show entry (Classes 43-50).

Only 1 entry per class per person or per dog.

A rosette is given for 1st, 2nd and 3rd places in each class. The Adult and Children cups are awarded to the Adult and Child with the most points accumulated in the show.

General Village Show Registration Form. (See website for online form)

Exhibitor details:

First and last Name	
Tel number	
Age if under 18	

Put CLASS Entry Number in boxes below.

Total

£1 per Main Class entry 50p per Child Class	Class No	Class No	Class No	Class No	Class No	Class No	Class No	
Floral (1-5)								
Fruit (6-9)								
Vegetables (10-16)								
Vegetables (17-23)								
Baking (24-27)								
Preserves (28-29)								
Homebrew (30-32)								
Crafts (33-35)								
Photography (36-37)								
Children's (38-42)								
	Grand Total entries							£

Floral (Class numbers 1-5)

1. Vase of three different perennials

2. Cut Garden flower arrangement min of 5 mixed flowers

1. Three stems of same flower
2. A single statement flower
3. A display of cut flowers fit for a king. Max 18 inches.

Fruit (Class numbers 6-9)

4. 3 Dessert apples
5. 3 Cooking apples
6. 3 of another Fruit
7. Display of mixed fruit

Vegetables (Class numbers 10-23)

8. A display of vegetables
9. 3 Onions
10. 5 Shallots
11. 3 Runner beans
12. 3 French beans
13. 3 Carrots
14. 3 Tomatoes
15. 3 Potatoes
16. Longest runner bean
17. A 'disaster' fruit or vegetable
18. A member of Squash or Pumpkin family
19. Exotic vegetable
20. Cabbage
21. A salad display

Baking (judged on appearance & taste) (Class numbers 24-27)

22. Decorated cake
23. Loaf Cake (ie lemon drizzle)
24. Yeast recipe – i.e. bread, buns etc
25. 6 Biscuits (same)

Preserves (judged on appearance & taste) (Class numbers 28-29)

26. Pot of Jam or Jelly
27. Pot of Chutney or Pickle

Homebrew (judged on appearance & taste) (Class numbers 30-32)

28. Beer
29. Wine
30. Other i.e. cider, sloe gin etc.

Crafts (Class numbers 33-35)

31. Soft craft i.e. knitting, sewing, crochet etc
32. Hard craft i.e. metal, jewellery, sculpture etc
33. Drawing or Painting

Photography (Digital) Class numbers 36-37 (send photos by email to haa.horspath@gmail.com)

34. Celebrations (Adult section)
35. Celebrations (Children's section)

Children's (age groups: 4 & under, 5-7yrs, 8-11 yrs, 12-16 yrs) (Class numbers 38-42)

36. Lego Model (Not a kit)
37. Drawing or painting
38. Mini Garden
39. Craft (Soft or hard)
40. Gingerbread biscuit creation

Dog Show Registration Form (Registration from 10.30am until class start time)

Dog Name	
Dog Age	
Dog Breed	
Handler Name	Age if under 16
Tel number	

(Dog Show form, and Village show form also available online via Google Form)
via website: <https://geoffroyon.webmate.me/HAAsocial.html>

Dog Show starts 11am on the Bowley Field. See times below

1. Best puppy
2. Best veteran
3. Best trick
4. Young dog handler
5. Loveliest Lady
6. Fabulous Fella
7. Best Crossbreed
8. Best Purebreed

Best in Show (all 1st place winners at 1pm) Maximum 4 classes per dog

Best puppy (under 1 year) 11.00am	
Best veteran (7 years and over) 11.15am	
Best (Single) Trick 11.30am	
Young dog handler 11.45am	
Loveliest Lady 12.00pm	
Fabulous Fella 12.15pm	
Best Crossbreed 12.30pm	
Best Purebreed 12.45pm	



**Morland House Surgery,
Morland Close,
Wheatley OX33 1DP**

The usual surgery opening hours are Monday to Friday 8am to 6.30pm
Saturday mornings (excluding Bank Holiday weekends) 8am to 10.30am for
prebooked telephone consultations only

Enhanced access hours are offered outside these times, please speak to one of the
reception team on 01865 872448 for more information.

When the surgery is closed, please contact the Out of Hours service by phoning 111

Dispensary is open during these hours:

Monday to Thursday 8.30am to 1.00pm, Friday 8.30am to 1pm and 2pm to 6.30pm

Dispensary is closed on Saturday morning.

Please visit www.morland-house.co.uk for a wealth of information and guidance on
managing a vast number of health conditions, symptoms, and treatment e.g.

1. A link to the electronic consulting service eConsult. Use eConsult to ask about your health symptoms, conditions, or treatment. You can even request things like sick notes and GP letters. From the home page click on 'Contact your GP practice Online'.
 2. A link to the NHS App. Download the App, or open the NHS website in a web browser, to set up and log in to your NHS Account. Owned and run by the NHS, your NHS Account is a simple and secure way to access a range of NHS services online.
 3. Up to date information on current news items including:
 - Staying safe in the hot weather
 - Prescribing policy for patients travelling abroad
 - Oxford Community Diagnostic Centre – X-Rays, blood tests, ultrasounds, CTs and more
- Information on the NHS 111 online service which is available 24/7

Wheatley Painters are proud to sponsor the Horspath Magazine

For all Interior & Exterior painting and home repairs.

A trusted locally-based family business to customers across Oxfordshire

Email: info@wheatleypainter.co.uk (for a free quote)

www.wheatleypainter.co.uk or call 07456816763

Do you have a story to tell?

Dying to write about your childhood, an adventure, your family? Itching to create a new monster, robot or child wizard? Why not join the Horspath Creative Writing Group? It's friendly, encouraging, fun and inclusive. Do join us for an introductory session (+ a cuppa and biscuit) to find out what we do:

Wednesday 23rd August at 2.30pm in the Horspath Hub

(The following piece was written by one of our members)



St Giles' Fair (Central Oxford)

I have to admit, I haven't been to the Fair since the Ali Baba Magic Carpet year when I couldn't walk in a straight line for two days after I staggered off it. However, I only have to think 'Fair' to evoke vivid memories of the confusion of smells, sounds and sights. As you walk down Cornmarket towards the ever-increasing din, the first of your senses to be alerted is smell. A heady mixture of fried onions, candy floss, toffee apples and diesel fumes tell you, you are almost there. You walk past the stalls selling this stuff and join what seems to be the rest of the Oxford population in one heaving, swirling mass of humanity moving along the Broad, ever deeper into the noise and chaos of the sideshows and rides. Your next sense to be assaulted is your hearing. This is mostly loud music belting out of speakers on the big rides, barely drowning out the generators but also the screaming of the warnings that the rides are about to begin or stop and the rattling and whooshing of the carriages, rails or arms of the massive structures. Overlaying the terrifying mechanical sounds are the human sounds. At first, noisy chatter as riders dive for their seats on whatever form of torture they have chosen, shortly followed by the screams and the hysterical laughter it seems no-one can suppress. As you are carried along by the throng, your next sense, sight, is bombarded by whirling and flashing lights and the brightest, shiniest of colours on the rides and sideshows. You are assailed by huge paintings depicting scenes of exaggerated human, animal and mechanical forms and everything is moving, up, along, round, down or in a gut-wrenching spin... *(The picture of St Giles' Fair, Central Oxford, above was taken in 1905)*

Many thanks to Minuteman Press for great service and help in the production of this magazine: oxfor@minutemanpress.com Tel: 01865 247 010

The Living Churchyard

It was over 20 years ago that St Giles became involved with the Living Churchyard and Cemetery project, set up by the Diocese of Oxford and the Berkshire, Buckinghamshire and Oxfordshire Wildlife Trust. An award was given “signifying that St Giles’ Churchyard has been recognised as an important haven for a variety of wildlife, including wild flowers, butterflies, birds and lichens and that

it is also being managed sympathetically for these plants and animals while respecting that it is a “special place of remembrance.” A small group of volunteers was formed and continues to work in the churchyard with the aim of enhancing the biodiversity of the area which has never been re-seeded or touched by any inorganic materials for hundreds of years. After the initial assessment of the area, a strict mowing plan was put into operation ensuring the survival of as many wild flowers and plants as possible. There are spring flowering areas which include Primroses, Celandines and Cowslips and following the wonderful display of Ox-Eye Daisies in the early summer, a late summer meadow contains a wide variety of different flowers and grasses including Knapweed, Cranesbill, Scabious and Yellow Rattle. (a hemi-parasitic plant which helps suppress the dominant grasses so allowing more flowers to grow). Bird boxes have been put up, including an Owl box and log piles, nettles and a compost heap provide habitats for many different species. The main work in the churchyard takes place during the summer months with mowing approximately every two weeks. For more information about the churchyard and what is currently to be seen please visit our new notice board which has been beautifully crafted by Chris Drew which can be found by the main gate of the church. New volunteers are always welcome and we can offer tea and cake on mowing days! Do come and join us. Please call one of us for more information or offers to help.



Gill Gray (01865 872793) and Sheila Frankum (01865 872793)

The picture shows the Ox-Eye Daisies

A Letter from the Vicar

Dear Friends,

I hope that you are all well and – for children, students and teachers – enjoying the school holidays? (I'm aware that the school holidays can be difficult for many families, for many reasons, so please do contact me if you are struggling, and would like a coffee and a chat to discuss what support might be available). I'm writing this during the last week of the school year – a time when many of us are thinking about transitions. On Wednesday 19th July, we had our last Chatter and Clatter (pre-school / babies and toddlers) session of the school year, in St Giles' Church. We said farewell to two of the children who have been with us since we began Chatter & Clatter, around 2 years ago, as they will begin primary school in September. Being a Vicar brings many privileges and joys, and spending time with children and families at Chatter & Clatter, in our Primary Schools, and in services in church, are among those many privileges. On Friday 21st July I welcomed Years 5 and 6, and Year 6 parents, and staff, from Horspath C of E Primary School into St Giles' for the Year 6 Leavers' service, as pupils prepare for the transition to Secondary School, in September. I love the way transitions – from nursery school to reception, and from class to class, and from Key Stage 1 to Key Stage 2, and Primary School to Secondary School, are marked and celebrated in schools today. Each child is valued, their achievements celebrated, and pupils are given opportunities to share memories, and concerns. 'Transition Days' – in which pupils visit their new classrooms, schools and teachers, towards the end of the school year – help children to better prepare for, and manage, change. How different it was when we were their age. As our work with children, families and young people has developed in recent years, along with our outreach to, and care for, other age groups, the need for better facilities in our church has become more apparent. In addition to our duty to maintain and care for our church building and churchyard - so that we can continue to welcome our Primary School for special services, and other villagers for weddings, baptisms and funerals, as well as our weekly Sunday services, and social events – we are keen to develop our church and grounds, so that we can continue to welcome everyone, and provide a safe space where all know that they are welcome, valued, and loved, unconditionally. Please speak to me, or a churchwarden, if you'd like to help support the outreach and work of St Giles' Church, or if you'd like me to visit, or meet up, for a coffee and chat. I hope to have more availability for visits over the school holidays, and I can also often be found in the Hub on a Friday morning.

God bless, Revd Karen x



Services in St Giles' Church for August & September 2023

6th August

11am

13th August

11am

20th August

11am for 11.15 start

27th August

11am

3rd September

11am

11am

10th September

11am

17th September

11am for 11.15 start

24th September

11am

The Transfiguration of our Lord

Morning Worship

The Tenth Sunday after Trinity

Parish Communion

The Eleventh Sunday after Trinity

Family Time (Refreshments served from 11am)

The Twelfth Sunday after Trinity

Parish Communion

The Thirteenth Sunday after Trinity

Morning Worship

Sunday Fun Time (The Hub)

The Fourteenth Sunday after Trinity

Parish Communion

Harvest Festival (child centred)

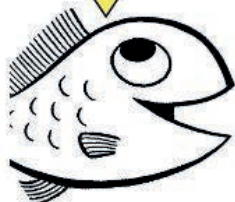
Family Time (Refreshments served from 11am)

Harvest Festival

Parish Communion

Please check FaceBook, Church and Village Notice Boards for details
of any other events and services. Thank You

Chatter & Clatter
St Giles' Church
9am - 11am



Play

Cake

Coffee

Interaction

Socialising

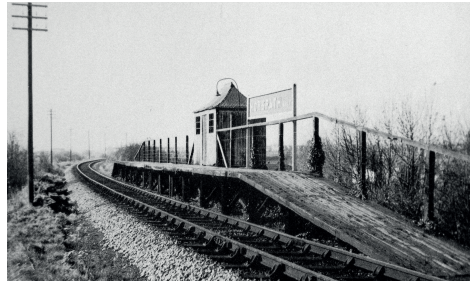
Come and join us on:
6th, 20th September
4th, 18th October
1st, 15th, 29th November
13th December

0 years
to
under 5's

Parents & Carers are welcome but must be accompanied by a child or 2!

Horspath and the Railway by Brian Lowe

Sufficient time has passed since the demise of our wonderful railway that now only the older members of Horspath can recall it – and in some respects, remembering it brings back how unusual it was as a village “facility”.... In the early 1860s, the tunnel was excavated, a deep cutting dug out to take the line towards the Green, and the spoil used to construct a large embankment beyond to take the line to Cowley. This deprived everyone in the village of the expansive views they had enjoyed across the fields to Garsington since before Domesday, and this loss might well have been mitigated if the village had benefited from being able to use this new railway.... but no, this was not yet to be ! The line opened for passenger traffic in 1865, but if you lived in Horspath it was not of much use, for there was no railway halt here. Horspath folk had to wait 35 years before a modest “Motor Rail Halt” was provided - in 1908 - perched high up on the embankment by the bridge. But just seven years later, in 1915, that was summarily closed as a World War One economy measure... and thus it was to be another 18 years before Horspath got its rail halt back... in 1933. Again, it was precariously sited on top of the embankment, constructed mainly of railway sleepers, with a short platform and a tin pagoda hut reminiscent of “The Mikado” which provided shelter but certainly not warmth from the prevailing westerly winds from Cowley, and reached by a steep cinder track from the green by the bridge – with a single light at the top. During WW2 the local Home Guard cut holes through the thin corrugated tin in the vain hope it could double up as a defensive pillbox! Another halt like this turned up at Towersey, just beyond Thame, equally spartan and bleak. The line featured another rarity in the form of the “diesel railcar”, introduced in 1937, and this single carriage became a very familiar form of transport on the Risborough to Oxford line until closure was threatened in 1957, following the Beeching Report. Ideally, it was so short that it could fit the Horspath platform easily, which the steam trains found impossible if using two carriages or more. Inevitably the line closed to passenger traffic in January 1963, and thereafter only occasional goods trains and “football specials” used the railway until final closure occurred in 1967, with the distinctive Halt being demolished and the track taken up shortly thereafter. Today the line from Cowley still reaches within the parish boundary, but used only by BMW; proposals to reopen this line to passengers going to Oxford are under consideration – but Horspath will undoubtedly remain “beyond the pale” as before. Horspath Halt’s claim to fame lies in the fact that Aldous Huxley wrote about it in his 1921 novel “Crome Yellow”, where the WW1 halt featured as the “station” serving Crome .. based on Garsington Manor !



Word Trivia by Clare Abbott (Resident here for 49 years)

All questions refer to words in the Oxford English Dictionary

1. What is unique about the word “queueing”? “Deeded”?
2. Which three words have the vowels used once only and in alphabetical order? One word with the vowels used in reverse order?
3. Which is the only letter of the alphabet not to appear in the name of any US state?
4. Who first used X to mean a kiss?
5. Which is the only word (and its derivatives) which ends in “mt”?
6. Which English word has the most meanings in the OED

Acronyms

If you think acronyms like LOL are a new invention, think again; the Romans used them two thousand years ago. Instead of always beginning communications with *si vales bene est, ego quidem valeo* (“if you are well, good, I am fine”) they wrote *SVBEEQV*. Quicker, but not easy to say.

As a teenager I received a couple of letters (from an older boy, which my mother put on the fire) with the names of places on the back of the envelopes. They were usually the names of countries- sometimes towns- used as acronyms, written in capital letters. HOLLAND Hoping Our Love Lasts And Never Dies FRANCE Friendship Remains And Can Never End And my favourite ITALY I Trust And Love You. Others were often rather rude, not much changes.

Answers to Word Trivia:

- | | |
|----|---|
| 1. | 5 vowels in a row. A word with only 2 different letters, each used 3 times. |
| 2. | Facetious, arsenious, abstemious (there are others) Subcontinental |
| 3. | Q |
| 4. | Gilbert White (“Natural History of Selborne”) in a letter of 1863 |
| 5. | Dreamt (and undreamt etc.) |
| 6. | Set |

Terry Turner 1928-2023

Terry died on May 8th aged 95. He had lived in Horspath for a long time, first in Gidley Way and then in Fords Close. He married Peggy and had 2 children Philip and Susan. Terry was originally from High Wycombe where he passed the 11 plus and went to a Grammar school. He excelled in sport particularly the sprint and went on to win many accolades. After school he went to work at The National Westminster Bank but this was interrupted by National Service in Singapore. He dallied with the idea of staying in the army but ultimately returned to the Nat West bank and remained with them until he retired. Terry continued his interest in both football and tennis and played badminton in the Horspath badminton Club. He was also a very good bridge player His other great interests were ballroom dancing and trains. He loved Jazz and particularly Glen Miller and he and Peggy danced until her death. Terry loved his garden, never lost his sense of humour and was getting quite at home in the Hub on a Friday. We shall miss him.



Rest in peace Terry.

VILLAGE CONTACT INFORMATION

(prefix for Horspath is 01865)

St Giles' Church	07856 456363
Garage: <i>(Horspath Service Station)</i>	87 3349
The Gurkha Palace	63 4534
The Hub	07951 933 964
Horspath Nursery	87 6750
Prospect: Handyman Bob	07786 115516
The Queens Head	87 5567
Horspath School	87 2702
Sheps Cycle Shack	87 6771
The Village Shop	87 2903
The Tap Room	604620
The Village Hall	07939 410762
Sunnyhill Vineyard	361535

The Beauty Room in Horspath is proud to sponsor the Horspath Magazine
I am an experienced beauty therapist & electrologist with over 10 years experience
For electrolysis, nails, massage and waxing and more. Please contact Katie Boyd:

Katie.thebeautyroom@hotmail.co.uk or call 07912 545099

Congratulations Aisha (age 5) at Horspath C of E Primary school



In June, the school took part in the River Learning Trust's Festival of Art. The theme for this year was 'The Colours I see'. All the children in the school produced a piece of artwork inspired by Kandinski's *Squares with Concentric Circles* and these were displayed in the school hall for parents and carers to enjoy. Next, each of the 19 primary schools in the Trust chose twelve winners from across four different key stages (Early Years, KS1, Lower KS2 and Upper KS2) whose work was



then exhibited in a gallery. From these works of art, four overall winners, one from each key stage, were selected. Horspath School was immensely proud when Aisha K's work was chosen from the Early Years category! Here is Aisha's work, alongside the painting which inspired her.

Governance opportunity at Horspath Primary School

At Horspath we are most fortunate to have a governing body which works hard for the school. One of our community governors is stepping down after eight years in the role so we are keen to find a replacement.

Community (also known as co-opted) governors do not need to have a direct connection to the school, Church of England or River Learning Trust. They sometimes come from the community in which the school is located and therefore know the needs of that community well. They are appointed by the governing body based on their skills, experience and perspective. Often with specialised knowledge in areas like HR, finance, law, data and/or education, they bring their skills and experience to contribute to the effective governance and success of the school, always acting in the best interests of the school and its wider community.

If you know of anyone in the local community, at your place of work or in your professional network who is keen to become involved in school governance at Horspath Primary School, please ask them to contact the school office. During the holidays it is easiest to email office@horspathschool.org. Once term starts on Monday 4 September, do telephone on 01865 872702. Alternatively, if you know one of our governors just ask for a chat! Anyone interested will be asked to complete an application form.

We are also advertising for a new Clerk to the Governing Body to start in September or October. You can find out all the details in the recruitment section of our website. www.horspathschool.org



Roman Boaler becomes British Champion



Roman's Coach said: "He is only the second ever rider to become the U10 **British Champion** at our club. We are pleased to have someone to inspire our young children too. Roman is a perfect role model and always tries to help others in training by offering advice and support. We are looking forward to watching him progress even further and hope that many more titles will come his way if he keeps up his hard work."

Ten year old Roman has been racing for two and a half years. He loves training with his Dad who is also a former British indoor & outdoor Champion, a few times a week. He's very sporty and also plays football. He's absolutely over the moon with his achievements and still has a chance of winning the South West Grand Prix for a 3rd year running. He leads the National Grand Prix after round one, and with the indoor British Championships still to come at the end of the year, which he came 2nd in last year, it looks like the future is going to be bright for him as he is still hoping to become a **double champion**.